



Qualität. Verlässlichkeit. Kompetenz.



Steam pressure cooker

Food is not boiled for too long time. The steam pressure cooks the food. Therefore >60% of the vitamins and >90% of the amino acids are preserved. As other valuable ingredients, like minerals, are not washed out, the food keeps its own taste. The adding of salt and other spices can be reduced. The food is of higher grade and better digestible.

Up to 70% time saving

A delicious goulash is ready in less than 30 min. Long time cooking dishes can be prepared in less than 1/5 of the regular time, e.g. dishes with fresh legumes, potatoes or other healthy vegetables soups (in 5 minutes) This creates more leisure time and quality of life. The reduced cooking times helps to save energy and therefore money.



Sous-Vide

Sous-Vide means translated into English: „Under Vacuum“. With this method the food is heated in a vacuum bag at a constant low temperature. Therefore the food is prepared perfectly homogeneous. Nutrients, vitamins, texture and colour is preserved. No other cooking method can create such constantly perfect cooking result. This kind of cooking was developed in France more than 30 years ago and established in the high end gastronomy. Modern STEBA-technology enables the easy and safe use of this unique professional technology at home.



Induction technology

Under the cooking zones of the glass ceramic hob, an electromagnetic field is generated. This creates turbulence in the bottom of the induction pot, and effectively only the pot and the food inside are heated. You can cook faster, safer and you can clean easily.

Speed: 1 liter of water boils in 4 minutes on an induction hob, on a hotplate in 10 minutes and on a conventional hob it still takes 8 minutes.

Safety: The heat is only generated in the bottom of the pot, which only transfers little heat to the glass ceramic material. Thus, burns nearly never happen. After removing a strongly heated pan, one should not touch the cooking zone with one's hands despite that. Even when the cooking zone is in operation, there is no danger of burns without a pot.

Cleaning: Wiping the induction hob with a damp cloth will be sufficient. As food boiled over cannot burn in, you do not have to scrape away anything.



Low-Fat Technologie

All Steba low fat grills have a non-stick coating; so you can barbecue without adding oil or fat. By an angle of inclination of the grill surface, excess fat from the food runs into a receptacle.



Principle of cool zones

The heating system located in the oil tank, provides a direct and effective heating of the oil. This optimal temperature constancy quickly closes the pores of the food and thus prevents the penetration of fat. Fried food remains digestible and healthy. Since the heated oil rises to the top, a much cooler area exists between the heating element and the bottom: the cool zone.

Advantages:

- The rests of fried food do no longer burn: the oil becomes more durable and can be used several times now.
- As nothing burns in, cleaning becomes very easy.
- A negative influence of residues on the flavour is excluded.



IP protection class

This short form stands for „Ingress Protection“, and means the „protection against intrusion.“ Electrical and electronic equipment must work safely under difficult environmental conditions for many years. The IP is built up by 2 numbers. The first digit represents protection against ingress of foreign bodies, such as „Protected against access with a finger.“ The second digit represents protection against ingress of liquids (e.g. water). At IP 21 the device is protected against dripping water. If bathroom heaters are permanently installed in the bathroom, the degree of protection should be at least IP 24 (protected against splashing water).



Ionization

A neutral, uncharged atom consists of protons and neutrons in the nucleus, around this core electrons move. If the atom loses an electron, it is positively charged and it is referred to as an ion. At any time, in our atmosphere positively and negatively charged ions can be found. Positive charged ions are often defined to be the trigger of many health problems and arise through radiation, machinery, cars and many more. The ionization function produces negative ions to re-establish the natural balance of ions and enhance human wellbeing.

Cooking and baking

Steamer/microwave	4
Baking and grilling machines	5
Compact baking ovens	6
Vacuum Sealer	9
Sous-Vide cooker	10
Steam pressure cooker	12
Healthy preparation	13
Egg boilers	14
Warming plates	15
Fruit Preserver	16
Fryers	17



Party grilling

Multi snack maker	18
Sandwich maker	19
Contact grillers	20
Low-fat grills	21
Barbecue grills	22
Table grills/Glass grills	27
Raclettes	28
Fondues	31



... and much more

Induction cookers	32
Juicer	35
Blenders	36



Air treatment

Fans	37
Air Purifiers	39
Dehumidifiers	40
Humidifiers	41
Ceramic Heaters	42
Heaters	44



Steamer / microwave



NEW Steam-microwave **DG 8**



- 5 microwave power levels max. 800 W output
- Steaming max. 1200 W
- Hot steam for gentle fast cooking
- Combination programs
- Defrost function
- LED Display
- 60 min. timer
- Chromed wire grill
- 25 ltr. volume
- Program for cleaning
- Interior lighting
- Child lock

25 ltr | 2800 W | 230 V ~

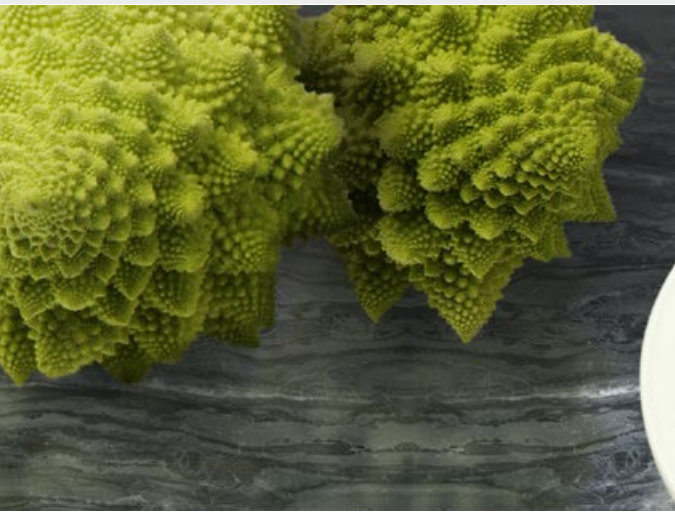
Outer Dim.: 33 x 50,5 x 45 cm
Inner Dim.: 21 x 33 x 33 cm
Housing: silver / black
Weight: 19,0 kg

Unit/pallet: 1/12
Art: 04.80.00



similar illustration

Baking and grilling machines



Bake and grill automat **G 80/31 C.4**



BBQ



Rotisserie



Upper &
lower heat



Timer

- Made in Germany
- Double glass door
- BBQ function
- Rotisserie spit
- Catalytic self cleaning cavity
- Upper-lower heat
- 3 baking levels
- 120 min. timer
- Program selector
- Temperature selector
- Interior light
- Enamelled baking pan
- Chromed wire grill
- Recipe roll

29 ltr | 1800 W | 230 V ~

Outer Dim.: 30 x 58 x 35 cm
Inner Dim.: 23 x 44 x 29 cm

Housing: champagne-metallic
Weight: 13,0 kg

Unit/pallet: 1/12
Art: 02.59.00



4 011833 000378

Grill automat **G 75/73 C.4**



similar illustration



BBQ



Rotisserie



Upper heat



Timer

- Made in Germany
- Double glass door
- BBQ function
- Rotisserie spit
- Catalytic self cleaning cavity
- Upper heat (grilling)
- 3 grill levels
- 120 min. timer
- Program selector for grilling
- Enamelled baking pan
- Chromed wire grill

22 ltr | 1800 W | 230 V ~

Outer Dim.: 30 x 58 x 29,5 cm
Inner Dim.: 23 x 44 x 25 cm

Housing: champagne-metallic
Weight: 12,3 kg

Unit/pallet: 1/12
Art: 01.93.00



4 011833 000361

Compact bake ovens



similar illustration

NEW Grill and bake oven **KB 41 ECO**



Rotisserie



Convection



Upper & lower heat



Capacity

- Double glass door
- Rotisserie spit for 2 chicken
- Switchable convection function
- Non-stick coated cavity
- Upper and lower heat
- Program selector
- Temperature control
- 90 min. timer
- Interior lighting
- 4 shelf levels for professionals
- Coated baking tray
- Crumb tray
- Wire grill

38 ltr | 1900 W | 230 V ~

Outer Dim.: 34 x 60,5 x 46 cm
Inner Dim.: 27 x 40,5 x 36 cm

Housing: silver
Weight: 12,5 kg

Unit/pallet: 1/8
Art: 04.81.00



4 011833 000927



Rotisserie



Convection



Upper & lower heat



Capacity

Grill and bake oven **KB 41**

- Stainless steel housing
- Double glass door
- Rotary spit for 2 chicken
- Switchable convection function
- Non-stick coated cavity
- Top and bottom heating
- Program selector
- Temperature controller
- 90 min. timer
- Inner space lighting
- 4 shelf levels for professionals
- Non-stick coated baking pan
- Chromium-plated barbecue grill

38 ltr | 2000 W | 230 V ~

Outer Dim.: 34 x 60,5 x 46 cm
Inner Dim.: 27 x 40,5 x 36 cm

Housing: stainless steel
Weight: 12,5 kg

Unit/pallet: 1/12
Art: 04.41.00



4 011833 000835



similar illustration

NEW Grill and bake oven **KB 28 ECO**



Rotisserie



Convection



Upper & lower heat



Capacity

- Double glass door
- Rotisserie spit
- Switchable convection function
- Non-stick coated cavity
- Upper and lower heat
- Program selector
- Temperature control
- 90 min. timer
- Interior lighting
- 3 shelf levels
- Coated baking tray
- Crumb tray
- Wire grill

28 ltr | 1400 W | 230 V ~

Outer Dim.: 31 x 51 x 41 cm
Inner Dim.: 24 x 36 x 33 cm

Housing: silver
Weight: 8,1 kg

Unit/pallet: 2/12
Art: 04.48.00



4 011833 000934



Rotisserie



Convection



Upper & lower heat



Capacity

Grill and bake oven **KB 28**

28 ltr | 1500 W | 230 V ~

Outer Dim.: 31 x 51 x 41 cm
Inner Dim.: 24 x 36 x 33 cm

Housing: stainless steel
Weight: 8,1 kg

Unit/pallet: 2/12
Art: 04.31.00



4 011833 000750

- Stainless steel housing
- Double glass door
- Rotisserie spit
- Switchable convection function
- Non-stick coated cavity
- 90 min. timer
- Inner space lighting
- Program selector
- Temperature selector
- Suitable for 33 cm baking tray
- Wire grill
- Non-stick coated baking pan
- Crumb tray



Convection



Upper & lower heat



Capacity

NEW Grill and bake oven **KB 23 ECO**

23 ltr | 1400 W | 230 V ~

Outer Dim.: 28 x 46 x 39 cm
Inner Dim.: 24 x 33 x 29 cm

Housing: silver
Weight: 6,8 kg

Unit/pallet: 2/16
Art: 04.33.00



4 011833 000941

- Double glass door
- Switchable convection function
- Non-stick coated cavity
- Upper and lower heat
- Program selector
- Temperature control
- 90 min. timer
- Interior lighting
- 3 shelf levels
- Coated baking tray
- Crumb tray
- Wire grill

similar illustration



Rotisserie



Convection



Upper & lower heat



Capacity

Grill and bake oven **KB 23**

23 ltr | 1500 W | 230 V ~

Outer Dim.: 28 x 46 x 39 cm
Inner Dim.: 24 x 33 x 29 cm

Housing: stainless steel
Weight: 6,8 kg

Unit/pallet: 2/16
Art: 04.30.00



4 011833 000743

- Stainless steel housing
- Double glass door
- Rotisserie spit
- Switchable convection function
- Non-stick coated cavity
- 90 min. timer
- Inner space lighting
- Program selector
- Temperature selector
- Suitable for 30 cm baking tray
- Wire grill
- Non-stick coated baking pan
- Crumb tray

Bake oven **KB 19**

19 ltr | 1300 W | 230 V ~

Outer Dim.: 26 x 43 x 36 cm
Inner Dim.: 22 x 30 x 28 cm

Housing: stainless steel
Weight: 5,6 kg

Unit/pallet: 2/16
Art: 04.29.00



4 011833 000736



Convection



Upper & lower heat



Capacity

- Stainless steel housing
- Double glass door
- Switchable convection function
- Non-stick coated cavity
- 90 min. timer
- Program selector
- Temperature selector
- Suitable for 28 cm baking tray
- Wire grill
- Non-stick coated baking pan
- Crumb tray





Knusprige Pizza,
guter Energieverbrauch



Rotisserie



Convection



Upper &
lower heat



Capacity

Grill and bake oven **KB 27 U.2**

20 ltr | 1500 W | 230 V ~

Outer Dim.: 28 x 43 x 35,5 cm
Inner Dim.: 22 x 30 x 31 cm

Housing: white
Weight: 7,0 kg

Unit/pallet: 2/24
Art: 04.27.00



Upper &
lower heat



Pizza-depth



Capacity

Bake oven **KB 16**

16 ltr | 1000 W | 230 V ~

Outer Dim.: 23 x 43 x 36 cm
Inner Dim.: 19 x 29 x 27 cm

Housing: stainless steel
Weight: 5,5 kg

Unit/pallet: 2/18
Art: 04.16.00



similar illustration



Upper &
lower heat



Pizza-depth



Capacity

NEW Mini bake oven **KB 11**

8 ltr | 1000 W | 230 V ~

Outer Dim.: 22 x 36 x 29 cm
Inner Dim.: 14,5 x 25 x 23 cm

Housing: silver
Weight: 3,5 kg

Unit/pallet: 4/32
Art: 04.11.00



Upper &
lower heat



Pizza-depth



Capacity

Mini bake oven **KB 9.2**

9 ltr | 800 W | 230 V ~

Outer Dim.: 20,5 x 37 x 34 cm
Inner Dim.: 16 x 26,5 x 24 cm

Housing: stainless steel
Weight: 3,5 kg

Unit/pallet: 4/35
Art: 04.32.00



NEW Stainless Steel Vacuum sealer VK 6



- Maximum vacuum: -0.8 bar
- Evacuation speed: 16 litres/ minute
- Automatic evacuation and sealing
- Extra sealing function
- Stop button for interrupting
- Pulse-function for vacuuming pressure-sensitive foods
- For film and bags up to 28 cm wide and any length
- Hose connection for vacuuming in containers
- Comes with film cutter

170 W | 230 V ~ |
Dimension: 6,5 x 34 x 15 cm

Housing: stainless steel
Weight: 1,4 kg
Unit/pallet: 6/120
Art: 05.06.00



Vacuum sealer VK 5



- Maximum vacuum: -0.8 bar
- Evacuation speed: 11 l/min
- Automatic evacuation and sealing
- Extra sealing function
- Stop button for interrupting
- For film and bags up to 30 cm wide and any length
- Hose connection for vacuuming in containers
- Integrated film cutter
- Comes with 10 bags with 3D structure

170 W | 230 V ~ |
Dimension: 9,5 x 39 x 17 cm

Housing: white
Weight: 1,6 kg
Unit/pallet: 6/120
Art: 05.05.00



NEW Vacuum sealer VK 4



- Maximum vacuum: -0.6 bar
- Evacuation speed: 8 l/min
- Convenient quick snap-in mechanism
- Automatic evacuation and sealing
- Extra sealing function
- Integrated film role holder with cutter
- For film and bags up to 30 cm wide and any length

150 W | 230 V ~ |
Dimension: 9,5 x 34 x 14 cm

Housing: White
Weight: 1,9 kg
Unit/pallet: 6/144
Art: 05.24.00



Sous-Vide cooker



NEW

Sous Vide cooker SV 100 PROFESSIONAL



Temperature adjustable



Mobile



Timer



Auto



Circulation

- High-performance Sous-Vide cooker
- Stainless steel housing
- Heats 30 litres to 56°C with an accuracy of 0.1°C in about 45 min.
- Water circulation 7.5 l/min
- Illuminated LCD display for:
 - selected temperature
 - current temperature
 - timer
- Exact electronic temperature control
- Mobile use
- On / off switch
- Can be used for any pan with a depth of 15 cm or more
- For up to 120 portions simultaneously
- The intrinsic flavour, the ingredients and the shape are best preserved by this method
- Optionally available:
 - Steba Vacuum sealer
 - Steba film-rols and bags

1500 W | 230 V ~ |

Dim.: 32 x 14,5 x 13 cm

Housing: stainless steel / black
Weight: 2,0 kg

Unit/pallet: 2/60
Art: 05.10.00



4 011833 301888



Sous-Vide

Sous-Vide means translated into English: "Under Vacuum". With this method the food is heated in a vacuum bag at a constant low temperature. Therefore the food is prepared perfectly homogeneous. Nutrients, vitamins, texture and colour is preserved. No other cooking method can create such constantly perfect cooking result.

This kind of cooking was developed in France more than 30 years ago and established in the high end gastronomy. Modern STEBA-technology enables the easy and safe use of this unique professional technology at home.





NEW Sous Vide cooker SV 2



similar illustration



- Sous-Vide cooker
- Stainless steel housing
- Allows precise cooking (max. 0,5°C difference)
- Efficient water circulation
- Illuminated LCD display for:
 - selected temperature
 - current temperature
 - timer
- Exact electronic temperature control up to 99°C
- 8 ltr. volume
- For up to 40 portions simultaneously
- Easy cleaning
- The intrinsic flavour, the ingredients and the shape are best preserved by this method

10 ltr | 1200 W | 230 V ~

Outer Dim.: 25 x 38 x 22 cm
Inner Dim.: 22 x 30 x 15 cm

Housing: stainless steel
Weight: 4,5 kg

Unit/pallet: 2/20
Art: 05.14.00



4 011833 301956

Sous-Vide cooker SV 1 PRECISE



- Stainless steel housing
- Removable non stick coated pot
- 6 ltr. volume
- Versatile:
 - Sous-Vide cooking (Profi-cooking method with vacuum bag in water bath)
 - Low temperature cooking
 - Cooking
 - Heating
 - Warming
- Allows precise cooking (max. 1°C difference)
- „Overcooking“ is practically impossible
- The intrinsic flavour, the ingredients and the shape are best preserved by this method
- Timer
- Exact electronic temperature control
- Easy cleaning

6 ltr | 500 W | 230 V ~

Outer Dim.: 23 x 29 x 37,5 cm
Inner Dim.: 11 x 20 x 28,5 cm

Housing: stainless steel / black
Weight: 3,6 kg

Unit/pallet: 2/32
Art: 05.04.00



4 011833 301802

Steam pressure cooker



Steam pressure cooker DD 1 ECO

- Elektronische steam pressure cooker
- Cool wall housing
- Removable stainless steel pot
- 5 ltr. volume
- Versatile:
 - Steam pressure cooking (2 pressure steps)
 - Slow cooking
 - Steaming
 - Cooking
 - Grilling
 - Warming
- Up to 70% faster cooking time
- Energy saving
- The intrinsic flavour, the ingredients and the shape are best preserved by this method
- 5-stage safety system
- 9 automatic programs
- Timer
- Easy cleaning due to dishwasher-safe parts
- Steaming insert for vegetables or fish

5 ltr | 900 W | 230 V ~

Outer Dim.: 31 x 28 x 30 cm
Inner Dim.: 13 x Ø 21,5 cm

Housing: stainless steel
Weight: 5,9 kg

Unit/pallet: 2/24
Art: 05.03.00



Steam pressure cooking with STEBA - **Easy, safe, healthy!**

Usable anywhere

The DD1 ECO, with integrated heating system, is usable anywhere where a power supply is available. It is space saving not only in the kitchen as the hob is free, but also the balcony or terrace is changed into an "outdoor" kitchen or is suitable at the camping to create delicious dishes.

Healthy food preparation

Food is not boiled for too long time. The steam pressure cooks the food. Therefore >60% of the

vitamins and >90% of the amino acids are preserved. As other valuable ingredients, like minerals, are not washed out, the food keeps its own taste. The adding of salt and other spices can be reduced. The food is of higher grade and better digestible.

Up to 70% time saving

A delicious goulash is ready in less than 30 min. Long time cooking dishes can be prepared in less than 1/5 of the regular time, e.g. dishes with fresh legumes, potatoes or other healthy vegetables soups (in 5 minutes) This creates more leisure time and quality of life.

The reduced cooking times helps to save energy and therefore money.

Maximum safety

The DD1 ECO is equipped with a 5-stage safety system, which is complying to the latest standards and e.g. avoids an opening under pressure. To open the lid a simple turn of the button is necessary, the steam pressure escapes controlled and then the lid is released.





Rice cooker RK 2

- Simple "one-knob" use
- Keep warm function
- Non-stick coated pot
- Stainless steel housing
- Power control light
- Steam valve
- Hinged lid with lock
- Handle
- Steaming insert for vegetables or fish

3,5 ltr | 700 W | 230 V ~
Dim.: 29 x 28 x 28 cm

Housing: stainless steel / white
Weight: 3,5 kg

Unit/pallet: 4/44
Art: 05.02.00



Steamer DG 1

- Stainless steel housing
- Fast steam generator
- Variable capacity (2,5 - 8 ltr.) due to 3 removable bottoms
- Rice insert
- Integrated drip tray for condensing water
- LCD Panel and display for
- 24 h pre-programming
- 24 h timer with buzzer and automat. power cut off
- 8 different cooking programs
- Water gauge
- Ext. refill opening for longer use

8 ltr | 800 W | 230 V ~
Dim.: 39 x 35 x 23 cm

Housing: stainless steel
Weight: 2,0 kg

Unit/pallet: 4/44
Art: 05.01.00



NEW Stainless steel yoghurt maker JM 2

- Timer function with power cut off for best consistency
- Power control light
- On / off switch
- LCD display
- 2,4 ltr total capacity
- Easy cleaning
- 12 glass yoghurt cups with lid à 0,2 ltr.
- Recipe booklet

2,4 ltr | 21 W | 230 V ~
Dim.: 12,5 x 31 x 25 cm

Housing: stainless steel / white
Weight: 2,5 kg

Unit/pallet: 4/96
Art: 18.32.00



Yoghurt maker JM 1

- Timer function with power cut off for best consistency
- Power control light
- On / off switch
- LCD display
- 1,2 ltr. total capacity
- Cable storage
- Easy cleaning
- 8 yoghurt cups with lid
- Recipe booklet

1,2 ltr | 22 W | 230 V ~
Dim.: 14 x 29 x 24 cm

Housing: white / grey
Weight: 1,1 kg

Unit/pallet: 4/80
Art: 18.15.00



Egg boilers



Electronic egg boiler **EK 5**



- Stainless steel housing
- Because of the electronic control no complicated water measuring necessary
- On-/ off switch
- Power control light
- Up to 8 eggs
- 2 poaching trays
- Eggtray
- Transparent lid
- Water cup
- Egg needle
- Cable storage

400 W | 230 V ~

Dim.: 15 x 17 x 19 cm

Housing: stainless steel / black
Weight: 1,2 kg

Unit/pallet: 6/120
Art: 42.05.00



Egg boiler **EK 3 PLUS**



- Stainless steel housing
- Stainless steel heating plate
- Poaching trays
- Steaming plate
- Up to 6 eggs
- On / off switch
- Power control light
- Buzzer
- Water cup for cooking adjustment
- Egg needle
- Cable storage

350 W | 230 V ~

Dim.: 15,5 x 23 x 11,5 cm

Housing: stainless steel / black
Weight: 0,9 kg

Unit/pallet: 6/240
Art: 42.06.00



Egg boiler **EK 4**



- Up to 3 eggs
- Transparent plastic lid
- Non-stick coated heating plate
- Egg tray with handle
- On / off switch
- Power control light
- Buzzer
- Water cup for cooking adjustment
- Egg needle
- Cable storage

350 W | 230 V ~

Dim.: 13 x 23 x 7 cm

Housing: white
Weight: 0,5 kg

Unit/pallet: 12/432
Art.: 42.04.00





Warming plate **WP 1**



- Double module (start and end piece)
- Suitable for single use
- Extendable up to 5 modules (145 cm length)
- Stepless temperature control (50 - 120°C)
- Power control light
- Stable glass surface
- Chromed handles
- Very slim design
- Space saving storage

2x135W | 230 V ~

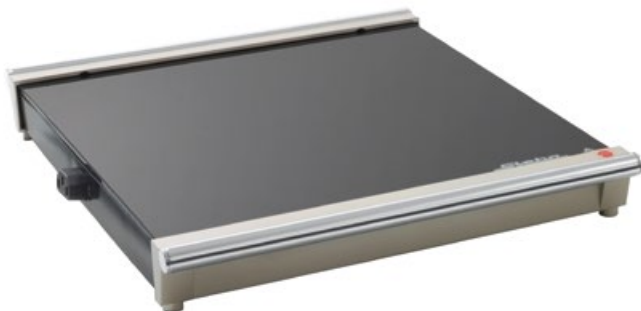
Dim.: 4,5 x 59 x 35 cm

Housing: glass / chrome
Weight: 3,5 kg

Unit/pallet: 4/66
Art: 50.01.00



Extensionmodule **for WP 1**



- Extensionmodule
- Power control light
- Stable glass surface
- Chromed handles
- Very slim design
- Space saving storage

135 W | 230 V ~

Dim.: 4,5 x 30 x 35 cm

Housing: glass / chrome
Weight: 1,7 kg

Unit/pallet: 8/120
Art: 99.50.00





Tip:

The SV 100 Professional makes every STEBA preserving cooker a professional sous-vide cooker for up to 60 servings.



NEW Preserving and hot punch cooker **ER 2**



Stainless steel



Capacity



Timer



Drain tap

- Hot punch/preserving cooker
- Stainless steel housing
- Continuously variable temperature control from 30°C - 100°C
- Temperature control signal
- 120 min. timer
- Multi-functional:
 - Preserving
 - Cooking
 - Hot punch
 - Thawing
 - Keeping warm
- Drain tap
- Lid with heated storage tray

27 ltr | 1800 W | 230 V ~

Dim.: 48 x 45 x 41 cm

Housing: stainless steel
Weight: 4,6 kg

Unit/pallet: 2/16
Art: 05.12.00



4 011833 301871

NEW Preserving cooker **ER EDS**



Stainless steel



Capacity



Temperature adjustable

- Preserving cooker
- Stainless steel housing
- Continuously variable temperature control from 30°C - 100°C
- Temperature control signal
- Multi-functional:
 - Preserving
 - Cooking
 - Thawing
 - Keeping warm
- Easy to clean
- Lid with heated storage tray

27 ltr | 1800 W | 230 V ~

Dim.: 48 x 45 x 41 cm

Housing: stainless steel
Weight: 4,6 kg

Unit/pallet: 2/16
Art: 05.08.00



4 011833 301987

NEW Preserving and hot punch cooker **ER 1**



Capacity



Timer



Temperature adjustable



Drain tap

- Preserving cooker
- Enamelled housing
- Continuously variable temperature control from 30°C - 100°C
- Temperature control signal
- 120 min. timer
- Multi-functional:
 - Preserving
 - Cooking
 - Hot punch
 - Thawing
 - Keeping warm
- Drain tap
- Lid with heated storage tray

27 ltr | 1800 W | 230 V ~

Dim.: 48 x 45 x 41 cm

Housing: white
Weight: 5,8 kg

Unit/pallet: 2/16
Art: 05.11.00



4 011833 301864

NEW Preserving cooker **ER Basic**



Capacity



Temperature adjustable

- Preserving cooker
- Enamelled housing
- Continuously variable temperature control from 30°C - 100°C
- Temperature control signal
- Multi-functional:
 - Preserving
 - Cooking
 - Thawing
 - Keeping warm
- Easy to clean
- Lid with heated storage tray

27 ltr | 1800 W | 230 V ~

Dim.: 48 x 45 x 41 cm

Housing: white
Weight: 5,8 kg

Unit/pallet: 2/16
Art: 05.07.00



4 011833 301949



Stainless steel fryer DF 282



Cool wall



Detachable



Immersion heating



Stainless steel

- Stainless steel housing
- Cool wall
- Completely detachable
- Detachable stainless steel oil tank
- For up to 1 kg food (recommended qty: 700 gr)
- Professional heating system: immersion heating system
- High performance heating element
- Lid with permanent mesh filter and glass window
- Basket-lift function when lid is closed

3,5 ltr | 2755 W | 230 V ~

Dim.: 30 x 29 x 38 cm

Basket: 7 x 16 x 23 cm

Housing: stainless steel / black

Weight: 3,25 kg

Unit/pallet: 2/24
Art: 26.28.00



4 011833 200259



NEW Stainless steel fryer DF 300



Detachable



Immersion heating



Capacity



3 Baskets

- Stainless steel housing
- Completely detachable
- Detachable oil tank
- Timer
- For up to 1,5 kg food (optimal: 1,0 kg)
- Professional heating system: immersion heating system
- Lid with permanent mesh filter and glass window
- Temperature control up to 190°C

5 ltr | 3000 W | 230 V ~

Dim.: 24,5x35,5x34,5 cm

Big basket: 10x29x18 cm

2 small baskets: 8 x 14 x 21 cm

Housing: stainless steel

Weight: 3,7 kg

Unit/pallet: 2/36
Art: 26.30.00



4 011833 200280



Stainless steel fryer DF 100



Capacity



3 Baskets

- Stainless steel housing
- For up to 1 kg food
- Large frying basket
- 2 small portion baskets
- Non-stick coated oil tank
- Adjustable thermostat up to 190°C
- On / off switch
- Power control light
- Lid with permanent mesh filter and glass window
- Lid opens automatic

3 ltr | 2000 W | 230 V ~

Dim.: 22 x 40 x 24 cm

Big basket: 8 x 29 x 13 cm

2 small baskets: 8 x 14 x 13 cm

Housing: stainless steel / black

Weight: 3,1 kg

Unit/pallet: 4/36
Art: 26.20.00



4 011833 200235



NEW Stainless steel fryer DF 180



Detachable



Immersion heating



Capacity

- Stainless steel housing
- Completely detachable
- Detachable oil tank
- For up to 1 kg food (optimal: 600 g)
- Professional heating system: immersion heating system
- Lid with XXL-glass window
- Variable temperature control up to 190°C

3 ltr | 2000 W | 230 V ~

Dim.: 21 x 16 x 41 cm

Frying basket: 8 x 14 x 24 cm

Housing: stainless steel

Weight: 2,8 kg

Unit/pallet: 4/36
Art: 26.38.00



4 011833 200273

Multi snack maker



similar illustration

Premium Multi snack maker „3 in 1“ SG 55



Sandwich



Waffle



Grill



Temperature adjustable

- Set of 3 non-stick coated plates for:
 - Sandwich
 - Waffle
 - Contact grilling
- „Easy-click-off“-system: plates are easily detachable
- Very easy cleaning
- Temperature control up to 210°C
- Handle lock
- Power control light
- Temperature control light
- Non-slip rubber feet

1100 W | 230 V ~

Dim.: 9,5 x 25,5 x 22 cm

Housing: black
Weight: 1,8 kg

Unit/pallet: 4/96
Art: 18.65.00



Multi snack maker „3 in 1“ SG 36



Sandwich



Waffle



Grill



On-Off

- Set of 3 non-stick coated plates for:
 - Sandwich
 - Waffle
 - Contact grilling
- On / Off switch
- „Easy-click-off“-system: plates are easily detachable
- Very easy cleaning
- Handle lock
- Power control light
- Temperature control light
- Non-slip rubber feet
- Cable storage
- Decorative plate made from brushed stainless steel

700 W | 230 V ~

Dim.: 9 x 23 x 20 cm

Housing: silver / stainless steel
Weight: 3,2 kg

Unit/pallet: 6/144
Art: 18.36.00



Sandwich maker **SG 40**



Sandwich



Big American

- Suitable for 4 sandwiches
- Suitable for Big American Toast
- Die cast sandwich plates
- Easy cleaning because of non-stick coating
- Temperature control light
- Power control light
- Handle lock
- Non-slip rubber feet
- Including recipes

1200 W | 230 V ~

Dim.: 12 x 27 x 35 cm

Housing: silver
Weight: 3,0 kg

Unit/pallet: 4/80
Art: 18.40.00



4 011833 100436

Sandwich maker **SG 20**



Sandwich



Big American

- Suitable for 2 sandwiches
- Suitable for Big American Toast
- Die cast sandwich plates
- Easy cleaning because of non-stick coating
- Temperature control light
- Power control light
- Handle lock
- Non-slip rubber feet
- Including recipes

700 W | 230 V ~

Dim.: 10 x 25 x 23 cm

Housing: silver
Weight: 2,0 kg

Unit/pallet: 6/144
Art: 18.09.00



4 011833 100313



Ideal für den großen
Sandwich-Hunger

Sandwich-Maker **SG 16**



Sandwich

- Suitable for 2 sandwiches
- Non-stick coated die cast sandwich plates
- Very easy cleaning
- Handle lock
- Power control light
- Temperature control light
- Non-slip rubber feet
- Vertical storing and cable storage
- Including recipes

700 W | 230 V ~

Dim.: 9,5 x 23 x 23 cm

Housing: silver / red
Weight: 1,4 kg

Unit/pallet: 6/144
Art: 18.26.00



4 011833 301895

Sandwich maker **SG 15**



Sandwich

- Suitable for 2 sandwiches
- Die cast sandwich plates
- Easy cleaning because of non-stick coating
- Temperature control light
- Power control light
- Handle lock
- Non-slip rubber feet
- Stainless steel cover

700 W | 230 V ~

Dim.: 9 x 23 x 23 cm

Housing: stainless steel / black
Weight: 1,7 kg

Unit/pallet: 6/144
Art: 18.25.00



4 011833 100399

Contact grillers



Contact griller PG 4.3



Grill



Flat



Open
grilling



Cook
au gratin

- Made in Germany
- Chrome housing
- Multiple use for:
 - Contact grilling
 - Cook au gratin
 - Open grilling on double surface
- Turnable non-stick coated die cast plates
- Grill area: 2 x 37 x 23 cm
- Flat plate for sausage, sea fruit etc.
- Temperature selector
- Self-adjusting 3d-hinge
- Handle lock
- Cable storage

2000 W | 230 V ~

Dim.: 12 x 46 x 34 cm

Housing: chrome
Weight: 6,4 kg

Unit/pallet: 4/48
Art: 16.13.00



Contact griller PG 4.4



Grill



Flat



Open
grilling



Cook
au gratin

- Made in Germany
- Multiple use for:
 - Contact grilling
 - Cook au gratin
 - Open grilling on double surface
- Turnable non-stick coated die cast plates
- Grill area: 2 x 37 x 23 cm
- Flat plate for sausage, sea fruit etc.
- Temperature selector
- Self-adjusting 3d-hinge
- Handle lock
- Cable storage

2000 W | 230 V ~

Dim.: 12 x 46 x 34 cm

Housing: champagne-metallic
Weight: 6,4 kg

Unit/pallet: 4/48
Art: 16.15.00



Low-fat grill FG 95



- Brushed stainless steel housing
- 1 flat plate + 2 grill plates
- Large non-stick coated grill area 2 x 29 x 25 cm
- Temperature selector
- Timer with signal
- Self-adjusting hinges for different meat thickness
- Cable storage
- Plate storage
- Multi use:
 - Contact grilling
 - Cook au gratin
 - Open grilling on double surface

1800 W | 230 V ~
Dim.: 20 x 36 x 34 cm

Housing: stainless steel / black
Weight: 5,5 kg
Unit/pallet: 2/28
Art: 18.20.00



Cool-Touch-Grill FG 70



- Cool-Touch-housing with stainless steel elements
- Adjustable thermostat for optimal grill results
- Detachable grill plates for easy cleaning
- 1 flat plate + 1 grill plate
- Large non-stick coated grill area: 2 x 27 x 24cm
- Low-Fat-function: Fat reduction by automatic draining of the fat into the integrated collector tray
- On / off switch
- Handle lock for vertical storage

1800 W | 230 V ~
Dim.: 13,5 x 37 x 36 cm

Housing: stainless steel / black
Weight: 5,4 kg
Unit/pallet: 4/52
Art: 18.70.00



TESTSIEGER		
IM TESTMAGAZIN - URTEIL		
Steba FG 70		
SEHR GUT		92,6 %
Im Test: 6 Kontaktgrills Testurteile: 1x sehr gut, 5x gut		Heft 11/2012



Low-fat grill FG 55



- Stainless steel housing
- Infinitely variable temperature control for the best grilling results
- Removable grill plates for easy cleaning
- Non-stick coating
- Smooth grilling surface: 2 x 25 x 22 cm
- Low fat function: Less fat due to automatic fat drain in integrated collection tray
- Versatile:
 - Contact grilling
 - Open grilling on double surface

1800 W | 230 V ~
Dim.: 17,5 x 32,5 x 33 cm

Housing: stainless steel / black
Weight: 3,5 kg
Unit/pallet: 6/48
Art: 18.55.00



Barbecue grills



BBQ grill VG 400



Lid



Int. heating element



Temperature



Stand



Thermometer

- Mega XXL grill plate Ø 53,5 cm
- Adjustable temperature control for best grilling results
- Low-fat: oil runs into a collector bowl
- High grilling temperatures and fast heating
- due to integrated heating element
- High-quality ceramic coating, on grill plate and outside of the lid for easy cleaning
- Cable guide for fry thermometer
- Table grill function
- Stable, easy detachable stand
- Suspension for grill accessories
- Large storage for grill accessories
- Temperature display
- Temperature control light
- Adjustable steam valve
- Extremely tender grilling results due to cover without drying out, also creating tasty crackling on the outside. The flavour, content and shape are therefore essentially retained

2200 W | 230 V ~

Dim.: 106 x 65 x 60 cm

Housing: black / red
Weight: 12,3 kg

Unit/pallet: 1/8
Art: 06.40.00



Sehr gute Grillergebnisse,
einfache Handhabung



Creative grilled!



Can be used as table grill
or conventional grill

Barbecue with Steba: The cover makes all the difference!

The "German Profi Barbecue Master" Frank Huhnke says:
„By the cover, especially tender barbecue results are achieved without drying out, and with the simultaneous development of a delicious crust. The intrinsic flavour, the ingredients and the shape are best preserved in this way.“



Further information about Frank Huhnke under:
www.wuerzburger-grillschule.de



BBQ grill VG 350 BIG



- XXL griddle 55 x 41 cm
- Infinitely variable temperature control for the best grilling results
- Low fat: Liquid drains into a collection tray
- High grilling temperature and rapid warm-up time due to integrated heating element
- Easy to clean due to removable griddle with non-stick coating
- Insulated handles
- Table top grill function
- Extremely tender grilling results due to glass cover without drying out, also creating tasty crackling on the outside. The flavour, content and shape are therefore essentially retained

2200 W | 230 V ~

Dim.: 107 x 57 x 67 cm

Housing: black
Weight: 10,5 kg

Unit/pallet: 1/8
Art: 06.35.00



TESTSIEGER	
TESTMAGAZIN - URTEIL	
Steba BBQ VG 350 BIG	
SEHR GUT	92,7 %
5 Elektro-Grills im Vergleichstest	Heft 06/2011





Lid



Int. heating element



Temperature



Stand



Low-fat

- XXL grill plate 44 x 39 cm
- Low-fat: oil runs into a collector bowl
- High grilling temperatures and fast heating due to integrated heating element
- Easy cleaning due to detachable, non-stick coated grill plate
- Adjustable temperature control for best grilling results
- Isolated handles
- Table grill function
- Attached grill lid can be used as a windshield, closed lid suitable for American BBQ or large food
- Stable, easy detachable stand

2200 W | 230 V ~

Dim.: 100 x 55 x 43 cm

Housing: black
Weight: 7,4 kg

Unit/pallet: 1/12
Art: 06.46.00



Der schnelle, spartanische Heizer



Can be used as table grill or conventional grill

BBQ grill VG 250



Lid



Int. heating element



Temperature



Stand



Low-fat

- Grill plate Ø 40 cm
- Low-fat: oil runs into a collector bowl
- High grilling temperatures and fast heating due to integrated heating element
- Easy cleaning due to non-stick coated grill plate
- Adjustable temperature control for best grilling results
- Isolated handles
- Table grill function
- Attached grill lid can be used as a windshield, closed lid suitable for American BBQ or large food
- Stable, easy detachable stand

1800 W | 230 V ~

Dim.: 95 x 52 x 48 cm

Housing: black / silver
Weight: 5,0 kg

Unit/pallet: 1/12
Art: 06.25.00



Einfach, praktisch und multifunktional einsetzbar



Can be used as table grill or conventional grill



NEW Premium BBQ table grill **VG 500**



Duotherm



Lid



Grill - Flat



Temperature



Thermometer

- Premium BBQ table grill with two individually adjustable heating systems
- Large grill area (27,5 x 33 cm) with grill pattern for steaks or fish and flat area (17 x 33 cm) for sausages, sea fruit etc.
- Infinitely variable temperature control for the best grilling results
- Low fat: Liquid drains into a collection tray
- Easy to clean due to removable non-stick coated grill plate
- Insulated handle
- Timer
- Temperature display
- Thermometer
- On/Off switch
- Hinged lid for extremely tender grilling results without drying out, also creating tasty crackling on the outside. The flavour, content and shape are therefore essentially retained.

2400 W | 230 V ~

Dim.: 26 x 52 x 47,5 cm

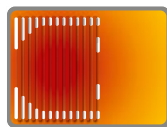
Housing: stainless steel
Weight: 14,8 kg

Unit/pallet: 1/8
Art: 06.05.00



Barbecue grills

with
„HOT ZONE“



BBQ table grill VG 200

- Large grill area 40 x 29 cm
- Low-fat: oil runs into a collector bowl
- Detachable die cast plate with flat surface for teppanyaki and grill pattern for steaks
- Easy cleaning due to non-stick coating
- Glass lid open as an efficient wind shield, closed usable for power heating or keeping warm
- Space saving upright storage

2200 W | 230 V ~

Dim.: 11 x 58 x 38 cm

Housing: black / glass
Weight: 5,5 kg

Unit/pallet: 4/32
Art: 06.49.00



Testsieger

Test
6/2013

**selber
machen**



Vertical
storing



Completely
detachable



BBQ table grill VG 120

- Grilling area 36 x 26 cm
- Infinitely variable temp. control
- Low fat: oil runs into a collector bowl
- Extruded aluminium griddle with grill pattern for steaks or fish and smooth area for sausages, seafood etc.
- Extremely tender grilling results due to glass cover without drying out, also creating delicious crackling on the outside. The flavour, content and shape are therefore essentially retained

1650 W | 230 V ~

Dim.: 9 x 44,5 x 37 cm

Housing: black / glass
Weight: 3,4 kg

Unit/pallet: 4/48
Art: 06.91.00



Electro BBQ VG 90 "compact"

- Grilling area 35 x 25 cm
- Solid detachable grill plate with integrated heating system
- Integrated windshield
- Easy cleaning because of non-stick coating
- Low-fat: oil runs into a collector bowl
- Adjustable temperature control

1300 W | 230 V ~

Dim.: 11 x 50 x 29 cm

Housing: black
Weight: 2,8 kg

Unit/pallet: 6/48
Art: 06.47.00





Stainless steel glass grill **GP 3 S**



Low-fat



Glass ceramic



Temperature



Warming

- High quality table grill with durable Schott Ceran® grill surface
- Robust stainless steel housing
- Spray protecting shield
- warming grid
- Minimal heating time
- Stepless temperature control up to 275°C for best grilling results
- Grill surface scraper for easy cleaning included
- Cool touch handles
- Low-fat-function with integrated, detachable oil collector tray for healthy food preparation

1200 W | 230 V ~

Dim.: 15 x 63 x 37 cm

Model: GP 3 S

Housing: stainless steel
Weight: 4,3 kg

Unit/pallet: 4/48
Art: 06.94.00



4 011833 301543

Model: GP 3

Art: 06.93.00



4 011833 301536

Glass grill **GP 2 ECO**



Energy-saving



Glass ceramic



Temperature



Warming

- Stylish table grill with hard-wearing ceramic glass grilling surface
- Highly efficient heating system (up to 30% less electricity used)
- Short warm-up time (< 5 min.)
- Electronic temperature control for the best grilling results
- Timer
- Cool Touch handles
- Stainless steel elements
- Low-fat-function
- Can also be used as warming plate

800 W | 230 V ~

Dim.: 7,5 x 55 x 33,5 cm

Housing: white / black
Weight: 3,2 kg

Unit/pallet: 4/64
Art: 06.22.00



4 011833 000828

NEW Teppanyaki table grill **TG 1**



Grill



Flat



Low Fat



Temperature adjustable

- Stylish Teppanyaki table grill with non-stick coated grilling surface
- Grill area (37 x 30 cm) with grill pattern for steaks and flat area for sausages, sea fruit etc.
- Infinitely variable temperature control
- Timer
- Low-fat-function with integrated, detachable oil collector tray
- Temperature control light
- Power control light
- Easy cleaning due to detachable grill plate
- Non-slip rubber feet

2000 W | 230 V ~

Dim.: 10,5 x 48 x 32 cm

Housing: Black
Weight: 4,2 kg

Unit/pallet: 4/40
Art: 06.61.00



4 011833 302052



Raclettes



Raclette grill RC 3 PLUS CHROME



- Made in Germany
- Chrome housing
- Turnable, enamelled die cast grill plate (grill pattern / flat)
- Stone plate
- 8 enamelled pans
- Dish washer safe
- Cut and scratch resistant
- Grill area ca. 26 x 26 cm
- Temperature selector
- On / off switch

1450 W | 230 V ~

Dim.: 14 x 36 x 36 cm

Housing: chrome
Weight: 9,4 kg

Unit/pallet: 2/28
Art: 62.13.00



Raclette grill RC 3 PLUS

- Made in Germany
- Turnable, enamelled die cast grill plate (grill pattern / flat)
- Stone plate
- 8 enamelled pans
- Dish washer safe
- Cut and scratch resistant
- Grill area ca. 26 x 26 cm
- Temperature selector
- On / off switch

1450 W | 230 V ~

Dim.: 14 x 36 x 36 cm

Housing: black
Weight: 9,4 kg

Unit/pallet: 2/28
Art: 62.09.00



Raclette grill RC 2.1

- Made in Germany
- Turnable, enamelled die cast grill plate (grill pattern / flat)
- 8 enamelled pans
- Dish washer safe
- Cut and scratch resistant
- Grill area ca. 26 x 26 cm
- Temperature selector
- On / off switch

1450 W | 230 V ~

Dim.: 14 x 36 x 36 cm

Housing: black
Weight: 7,0 kg

Unit/pallet: 2/28
Art: 62.12.00





Multi raclette RC 58



- Stone grill plate
- Non-stick coated aluminium cast plate
- 8 non-stick coated pans with isolated handles
- Temperature selector
- Non-slip feet
- Grilling area ca. 37 x 23 cm

1200 W | 230 V ~

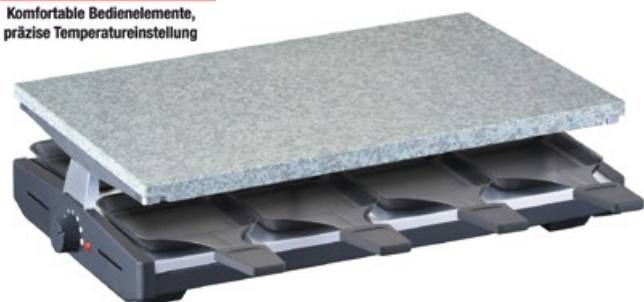
Dim.: 11 x 39,5 x 23 cm

Housing: black / stainless steel
Weight: 4,4 kg

Unit/pallet: 4/60
Art: 63.58.00



Komfortable Bedienelemente,
präzise Temperatureinstellung



Stone-raclette RC 48



- Stone grill plate
- 8 non-stick coated pans with isolated handles
- Temperature selector
- Non-slip feet
- Grilling area ca. 37 x 23 cm

1200 W | 230 V ~

Dim.: 11 x 39,5 x 23 cm

Housing: black / stainless steel
Weight: 6,3 kg

Unit/pallet: 4/60
Art: 63.48.00



Cast-raclette RC 38



- Non-stick coated aluminium cast plate
- 8 non-stick coated pans with isolated handles
- Temperature selector
- Non-slip feet
- Grilling area ca. 37 x 23 cm

1200 W | 230 V ~

Dim.: 11 x 39,5 x 23 cm

Housing: black / stainless steel
Weight: 3,1 kg

Unit/pallet: 4/60
Art: 63.38.00



Raclettes

TESTMAGAZIN - URTEIL	
Sveba RC 44	
GUT	87,5 %
Im Test: 13 Raclettes Testurteil: 1x sehr gut, 11x gut, 1x befriedigend	
Heft 11/2011	



Stone-raclette **RC 44**



- Stone grill plate
- 4 non-stick coated pans with isolated handles
- Temperature selector
- Non-slip feet
- Grilling area ca. 20 x 23 cm

800 W | 230 V ~
Dim.: 11 x 20,5 x 23 cm

Housing: black / stainless steel
Weight: 3,1 kg

Unit/pallet: 4/120
Art: 63.44.00



Cast-raclette **RC 34**



- Non-stick coated aluminium cast plate
- 4 non-stick coated pans with isolated handles
- Temperature selector
- Non-slip feet
- Grilling area ca. 20 x 23 cm

800 W | 230 V ~
Dim.: 11 x 20,5 x 23 cm

Housing: black / stainless steel
Weight: 1,9 kg

Unit/pallet: 4/120
Art: 63.34.00



Cast-raclette **RC 28**



- Extruded aluminium plate with non-stick coating
- 8 raclette pans with non-stick coating
- Grilling area with grill pattern for steaks or fish, and smooth area for sausages, seafood etc.
- Infinitely variable temperature control
- On / off switch
- Power on lamp
- Non-slip feet
- Grilling area: 45 x 30 cm

1400 W | 230 V ~
Dim.: 14,5 x 45 x 30 cm

Housing: black / chrome
Weight: 2,5 kg

Unit/pallet: 4/40
Art: 63.28.00



Raclette **RC 12**



- Non-stick coated grill plate
- 8 non-stick coated raclette pans
- Temperature selector
- On / off switch
- Grill area 43 x 30 cm
- Non-slip feet

1200 W | 230 V ~
Dim.: 13 x 47 x 33 cm

Housing: black / chrome
Weight: 2,5 kg

Unit/pallet: 2/46
Art: 63.04.00





Induction-fondue + wok **IK 11 S**

- Cooking area: Ø 16,5 cm
- Temperature control (60 - 240°C)
- 6 power steps
- Timer function (10 - 120 min.)
- Easy cleaning
- Including stainless steel wok with glass lid
- Including stainless steel fondue pot with 6 forks
- Safe:
 - Automatic pot recognition
 - Turns off when no pot is on the top
 - Base of pot is heated directly

1000 W | 230 V ~

Dim.: 8 x 25 x 25 cm

Housing: white / black / stainless steel
Weight: 5,8 kg

Unit/pallet: 2/36
Art: 06.83.00



Cast iron fondue **FO 1.1**

- Cast iron fondue set
- With stainless steel covers
- High-quality enamelled cast iron pot
- Stainless steel fondue ring
- 8 stainless steel fondue forks with different colours
- Parts dish washer safe
- Infinitely variable temperature control (up to 190°C)
- Power control light
- Cable storage

1,4 ltr | 1500 W | 230 V ~

Dim.: 17 x 30,5 x 21 cm
Pot: Ø21 x 8 cm

Housing: black / black
Weight: 3,4 kg

Unit/pallet: 4/40
Art: 27.01.00



similar illustration



Ceramics fondue **FO 1.2**

- Ceramic-fondue-set
- Ideal for cheesefondue
- With stainless steel covers
- High-quality ceramic pot
- Stainless steel fondue ring
- 8 bread forks with different colours
- Parts dish washer safe
- Infinitely variable temperature control (up to 190°C)
- Power control light
- Cable storage

1,6 ltr | 1500 W | 230 V ~

Dim.: 17 x 29,5 x 21 cm
Pot: Ø21 x 8 cm

Housing: black / white
Weight: 2,3 kg

Unit/pallet: 4/40
Art: 27.02.00



Mini-fryer / fondue set **DF 90**

- Stainless steel housing
- Non-stick coated oil tank for easy cleaning
- For 1-2 portions of food
- Adjustable thermostat up to 190°C
- Isolated housing
- Detachable lid with permanent filter
- Incl. fondue set:
 - 6 stainless steel fondue forks with different colours
 - Fondue ring

0,9 ltr | 840 W | 230 V ~

Dim.: 22 x 23 x 20 cm
Basket: Ø13 x 7 cm

Housing: stainless steel / black
Weight: 1,2 kg

Unit/pallet: 6/120
Art: 26.19.00



Induction cookers



NEW Double induction cooker **IK 300 S.C.**



Induction



Plates



Build-in



Temperature adjustable

- Schott Ceran® surface
- 2 cooking plates ø 28 cm
- Build-in feature
- Mobile use
- Touch control
- Temperature control (60 - 240°C)
- 10 Power steps
- Timer function (0 - 180 min.)
- Plate L 1800 W/ plate R 1300 W
- Automatic pot recognition
- Up to:
 - 90 % Efficiency
 - 50 % Energy saving
 - 30 % Faster Cooking

3100 W | 230 V ~

Plate L 1800 W / plate R 1300 W
Dim.: 7,0x69,0x42,0 cm

Housing: black
Weight: 7,5 kg

Unit/pallet: 2/24
Art: 06.80.00



4 011833 301901

Double induction cooker **IK 200**



Induction



Plates



Timer



Build in

- Solid coloured glass ceramic surface
- Cooking area: 26 x 40,5 cm
- Build-in feature
- Mobile use
- Touch control
- 8 Power steps
- Timer function (5 - 99 min.)
- Safe:
 - Automatic pot recognition
 - Turns off when no pot is on the top
 - Base of pot is heated directly
 - Child lock

3100 W | 230 V ~

Plate L 1800 W / plate R 1300 W
Dim.: 8 x 29 x 51 cm
Installation (H/W/D): 8 x 27 x 49 cm
Housing: black
Weight: 5,5 kg

Unit/pallet: 1/52
Art: 06.78.00



4 011833 300942

Double induction cooker **IK 100**



Induction



Plates



Timer



Temperature adjustable

- Solid coloured glass ceramic surface
- Cooking area: 73 x 35 cm
- Build-in feature
- Mobile use
- Temperature control (60 - 240°C)
- 10 Power steps
- Timer function (5 - 180 min.)
- Safe:
 - Automatic pot recognition
 - Turns off when no pot is on the top
 - Base of pot is heated directly

3100 W | 230 V ~

Plate L 1800 W / plate R 1300 W
Dim.: 7 x 73 x 43 cm
Installation (H/W/D): 6 x 67 x 40 cm
Housing: black / anthracite
Weight: 8,2 kg

Unit/pallet: 2/24
Art: 06.71.00



4 011833 300744



- Hard-wearing, continuous ceramic glass surface
- Cooking area: 28 x 28 cm
- Can be built in
- Also for mobile use
- Touch Control
- Temperature control (60 - 240°C)
- 10 power settings (500 - 2000 W)
- Safety features:
 - Automatic pan detection
 - Shuts off without pan
 - Base of pot is heated directly
 - Child safe

2000 W | 230 V ~
Dim.: 6,5 x 30 x 37 cm

Housing: black
Weight: 3,0 kg

Unit/pallet: 4/64
Art: 06.60.00



similar illustration



- EuroKera glass ceramic surface
- 2 hobs
- Bridge function:
 - for + 30 % cooking area
 - Ideal for roasting pans up to 50 cm wide
- Slide control
- 9 Power steps
- Timer function (0-99 min.)
- Boost function:
 - Hob L 2600 W / hob R 2000 W
 - Full area 3500 W

3500 W | 230 V ~
Dim.: 4,5 x 58,5 x 39 cm
Full area: 3000 W
Hob L: 2000 W / Hob R: 1500 W
Housing: black
Weight: 6,1 kg

Unit/pallet: 3/33
Art: 06.80.00



- Ultra-thin induction hob
- Solid coloured glass ceramic surface
- Cooking plate ø 25 cm
- Mobile use
- Slide control
- Temperature control (60 - 240°C)
- 8 Power steps (300 - 2000 W)
- Timer function (0-180 min.)
- Safe:
 - Automatic pot recognition
 - Turns off when no pot is on the top
 - Base of pot is heated directly
 - Child lock
- Easy cleaning

2000 W | 230 V ~
Dim.: 4 x 32 x 39 cm

Housing: black
Weight: 2,7 kg

Unit/pallet: 4/84
Art: 06.07.00



4 cm

STEBA-Induction cookers

- up to:
- 90% efficiency
 - 50% less power
 - 30% faster cooking

Induction cookers



Comfort induction cooker **IK 50 OT**



Weist die beste Bedienung
im Testfeld auf



Induction



Timer



Temperature
adjustable

- Solid coloured glass ceramic surface
- Cooking area: 26 x 26 cm
- Easy use because of control dial
- Exact temperature control (60 - 240°C)
- 10 Power steps (400 - 2000 W)
- Timer function (0 - 180 min.)
- Easy cleaning
- Suitable for pots made from die cast iron or steel from Ø 12 cm on

2000 W | 230 V ~

Dim.: 5,8 x 38 x 30 cm

Housing: black / silver
Weight: 2,3 kg

Unit/pallet: 8/70
Art: 06.77.99



Comfort induction cooker **IK 23**



Induction



Timer



Temperature
adjustable

- Solid coloured glass ceramic surface
- Cooking area: 28 x 27 cm
- Temperature control (60 - 240°C)
- 10 power steps
- Timer function (5 - 180 min.)
- Safe:
 - Automatic pot recognition
 - Turns off when no pot is on the top
 - Base of pot is heated directly
 - Residual heat display

2000 W | 230 V ~

Dim.: 6,5 x 28,5 x 34 cm

Housing: black / silver
Weight: 2,9 kg

Unit/pallet: 6/96
Art: 06.23.00



High-Light hob **HK 20**



High-Light



2 heating
circuits



Timer



Residual heat
indicator

- Hard-wearing, continuous ceramic glass surface
- Cooking area 31 x 28 cm
- 2 heating circuits 12 cm / 1000 W and 18 cm / 2000 W
- Touch control
- 10 power settings (100 - 2000 W)
- Timer function (120 min.)
- LED display
- Easy to clean
- Suitable for any saucepan
- Child safe
- Efficient High-Light technology

2000 W | 230 V ~

Dim.: 6 x 31 x 38 cm

Housing: black
Weight: 2,9 kg

Unit/pallet: 4/64
Art: 06.32.00





NEW Premium Juicer E 160

6000
12000
r.p.m.



- Stainless steel housing
- Powerful 1000 Watt high-performance motor
- Speed for optimum results, continuously variable
- LCD display
- Extra-large filling opening (84 mm)
- Automatic ejection into the 2 litre waste container
- 0,75 ltr. juice jug
- Thermal motor protection for long service life
- Stainless steel grater
- Non-slip feet

1000 W | 230 V ~

Dim.: 44 x 15 x 26 cm

Housing: stainless steel
Weight: 4,1 kg

Unit/pallet: 4/32
Art: 18.46.00



4 011833 301840



NEW Stainless steel juicer E 91

9000
15000
r.p.m.



- Stainless steel housing
- Speed for optimum results, continuously variable
- Large filling opening (75 mm)
- Automatic ejection into the 2 ltr. waste container
- Thermal motor protection for long service life
- Stainless steel grater
- Dishwasher-safe parts
- Non-slip feet

600 W | 230 V ~

Dim.: 40 x 18 x 25 cm

Housing: stainless steel
Weight: 3,2 kg

Unit/pallet: 4/32
Art: 18.91.00



4 011833 301857



Design citrus press ZP 1



- Stainless steel housing
- Start / stop automatic
- Silent motor
- 2 cones for different fruit sizes
- Spout with drip stop
- Stainless steel filter
- Flavour cover
- Cable storage

85 W | 230 V ~

Dim.: 26 x 15 x 17 cm

Housing: stainless steel / black
Weight: 1,8 kg

Unit/pallet: 4/96
Art: 25.01.00



4 011833 301000

Blenders



Stick blender **MX 21**

4000
13000
r.p.m.

4
Knife

Whisk

Chopper

- Stainless steel housing
- Extra long mixing stick made of stainless steel
- Stepless speed control from 4.000 up to 13.000 rpm
- Turbo button for 16.000 rpm
- Soft touch handle
- Dish washer suitable parts
- Wall mounting
- Mixing cup with scale
- Six attachments

700 W | 230 V ~

Dim.: 45 x 8 x 8 cm

Housing: stainless steel / black
Weight: 1,1 kg

Unit/pallet: 4/72
Art: 28.05.00



4 011833 301321

Hand mixer **HM 2**

Hooks

8
Power
steps

- Stainless steel housing
- Stainless steel dough hooks
- Stainless steel beaters
- 8 speeds
- Turbo button
- LCD display
- Eject-button

300 W | 230 V ~

Dim.: 15 x 9 x 19 cm

Housing: stainless steel / black
Weight: 1,3 kg

Unit/pallet: 6/300
Art: 28.04.00



4 011833 301208

Electrical knife **EM 2**

Box

Fork

- Powerful electrical knife
- 19 cm serrated stainless steel knife with easy-eject button
- New: with stainless steel cryoscope
- Premium accessories:
 - Storage container
 - Carving fork
- Dishwasher-safe parts

100 W | 230 V ~

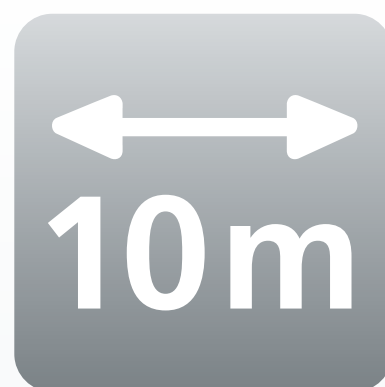
Dim.: 5,5 x 26 x 6 cm

Housing: white
Weight: 1,3 kg

Unit/pallet: 12/312
Art: 29.02.00

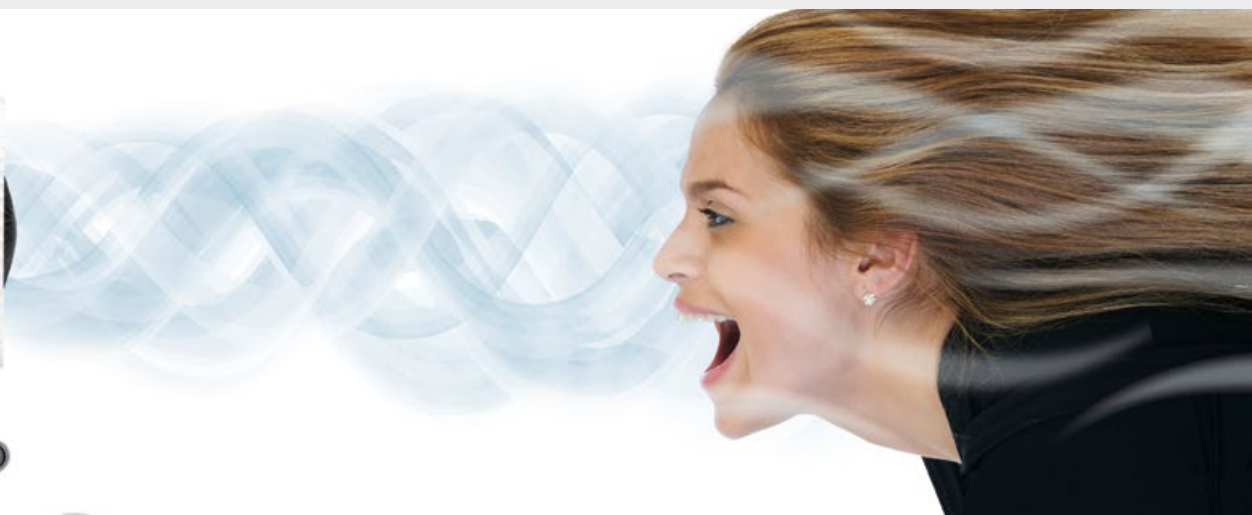


4 011833 301376



The concept for cool heads:

The STEBA VT STORM-TUBE promotes cold air from the soil radial upwards. His very high air output and the unique whirling technology provide effective air circulation and thus cooler temperatures at headroom. Unlike conventional ventilators, which by means of an airstream cause evaporation on the skin, STEBA ventilators avoid direct blowing on bodies that may cause colds by draughts.



Fan VT 3 STORM-TUBE

- TUBE design
- Unique swirling technology
- Jet-shaped flow of air
- Extremely long throw: 10 m
- High level of continuous air output
- 3 power settings
- Air outlet diameter: 25 cm
- Pivoting -15° - 90°
- Convenient carry handle
- Secure footing
- Extremely effective air circulation

60 W | 230 V ~

Dim.: 44,5 x 40 x 35 cm

Housing: silver
Weight: 4,3 kg

Unit/pallet: 4/30
Art: 35.30.00



Fan VT 2 STORM-TUBE

- TUBE design
- Unique swirling technology
- Jet-shaped flow of air
- Long throw: 6 m
- High level of continuous air output
- 2 power settings
- Air outlet diameter: 18 cm
- Pivoting -15° - 90°
- Convenient carry handle
- Secure footing
- Extremely effective air circulation

55 W | 230 V ~

Dim.: 30 x 29 x 22 cm

Model: white
Housing: white
Weight: 2,0 kg

Unit/pallet: 6/72
Art: 35.02.00



Model: yellow
Housing: yellow
Weight: 2,0 kg

Unit/pallet: 6/72
Art: 35.03.00



Model: blue
Housing: blue
Weight: 2,0 kg

Unit/pallet: 6/72
Art: 35.04.00



Ein echtes Kraftpaket, das leicht zu bedienen ist



Energy-saving



-90%/2h Reduction



Power steps



Room size

Air Purifier LR 8 ELECTROSTATIC

15 W | 230 V ~

Dim.: 42 x 16,5 x 28 cm

Housing: black

Weight: 5,1 kg

Unit/pallet: 2/32

Art: 36.28.00



4 011833 301420

- Innovative electrostatic air purifier
- Ideal for persons suffering from allergies
- Low power consumption (max. 15 W with turbo button)
- No filter replacement required
- Effective filtering of:
 - Fine dust
 - Microbes
 - Viruses
 - Pollen
 - Cigarette smoke
- For rooms up to 40 m²



Energy-saving



Power steps



Room size

Air Purifier LR 6 ELECTROSTATIC

9 W | 230 V ~

Dim.: 30 x 16 x 17 cm

Housing: black

Weight: 2,1 kg

Unit/pallet: 4/66

Art: 36.26.00



4 011833 301406

- Innovative electrostatic air purifier
- Ideal for persons suffering from allergies
- Minimum power consumption (max. 9 W)
- No filter replacement required
- Effective filtering of:
 - Fine dust
 - Microbes
 - Viruses
 - Pollen
 - Cigarette smoke
- For rooms up to 25 m²

STEBA Air Purifier - effective filtering:

Fine dust: Finest dust particles that cannot be seen with the naked eye are generated, for example, by diesel engines, heating systems, chimneys, cigarette smoke, printers or mechanical abrasion.

Problem: Because of its minimal size, fine dust penetrates almost unobstructed through the mucous membranes and accumulates in the body. This can cause inflammations and allergies. It is proven that the load in rooms is many times higher than in the open air.

What can be done against fine dust in rooms? In addition to the regular ventilation and vacuum cleaning of the rooms, especially the use of an air cleaner with HEPA filter significantly decreases the fine dust load. The STEBA Electrostatic Air Cleaners can do this even more efficiently, as they remove particles down to the size of viruses.



Timer



Very silent



Ionisation



Remote control

Air cleaner LR 5 ELECTRONIC

30 W | 230 V ~

Dim.: 48 x 36 x 15 cm

Housing: silver

Weight: 5,8 kg

Unit/pallet: 2/28

Art: 36.01.00



4 011833 300775

- 4-stage filter against particulate matter, pollen & microbes:
 - Pre-filter
 - HEPA filter
 - Activated carbon filter
 - Cold catalysis filter
- Suitable for allergies
- Ionisation separate switchable
- 3 different speeds
- 12 h timer
- Large LCD
- Remote control
- For rooms up to ca. 30 m²



16ltr.
24 h
Dehumidification

AUTO
Humidity control

Casters

Hose connect

Silent

Dehumidifier LE 160 ELECTRONIC

- Electronic dehumidifiers
- Dehumidification capacity up to 16 l / day
- air circulation:
 - step 1 / ca. 140 m³ / hr.
 - step 2 / ca. 180 m³ / hr.
- Electronic humidity control
- Comfort programm
- Removable 2 ltr water tank
- Automatic shut off and warning function when tank is full
- Hose connection for continous water flow
- Automatic defrost function
- 24 h timer
- On / off switch
- Washable permanent filter
- Adjustable air outlet
- Convenient handle
- Casters
- Silent, 45 dB(A)
- Ecological refrigerant R134A
- For rooms up to 30 m²

410 W | 230 V ~
Dim.: 50 x 36,5 x 22 cm

Housing: black / white
Weight: 13,3 kg

Unit/pallet: 1/27
Art: 36.61.00



Steba dehumidifier - comfortable climate at home

The air is being enriched with an average humidity of 8.5 litre in a 4 person household every day. Especially in modern isolated houses, cool cellars and unheated adjoining rooms, the high humidity can no longer escape through the normal circulation.

If regular ventilation is not possible or unsuccessful, it can lead to dangerous mould growth, which can cause a variety of serious diseases and allergies.

Steba dehumidifier create an optimal indoor climate through their high dehumidifying power and automatic air humidity control, which counteract mould growth and prevent musty odours.



10ltr.
24 h
Dehumidification

AUTO
Humidity control

Hose connect

Silent

Dehumidifier LE 100

- Dehumidification capacity up to 10 l / day
- Air circulation ca. 120m³ / hr.
- Stepless humidity control
- Removable 2 ltr. water tank
- Automatic shut off and warning function when tank is full
- Hose connection for continous water flow
- Automatic defrost function
- Washable permanent filter
- Adjustable air outlet
- Convenient handle
- Very siltent, 43 dB(A)
- Ecological refrigerant R134A
- For rooms up to 20 m²

250 W | 230 V ~
Dim.: 49 x 36,5 x 22 cm

Housing: black / white
Weight: 11,5 kg

Unit/pallet: 1/27
Art: 36.60.00



Design humidifier **LB 6 CUBE**



CUBE
CUBE-
design



Eco mode



AUTO
Humidity
control



25
qm
Room size

- Ultrasonic atomisation min. 100 ml / h to max. 300 ml / h
- Air humidity control 30% up to 70%
- 12 h timer
- Large LED display
- Touch control
- Water preheating possible
- 3 speed levels
- Illumination
- Additional scale filter
- 4 ltr. water tank
- Economy level: 40 W
- Very silent (<35 dB(A) at level 1)

4 ltr | 115 W | 230 V ~

Dim.: 30 x 34 x 15 cm

Model: white / blue

Housing: white / blue

Weight: 3,8 kg

Unit/pallet: 6/48

Art: 36.06.00



4 011833 301338

Model: black / red

Art: 36.16.00



4 011833 301369

NEW

Humidifier **LB 7**



Eco mode



AUTO
Humidity
control



Ionisation



Remote
control

- Ultrasonic water vaporization min. 250 ml/h to max. 400 ml/h
- Air humidity control 45% up to 90%
- 3 speed levels
- Economy level: 30 W
- Water preheating possible
- 12 h timer
- Large LED display
- Touch control
- Including ceramic filter
- For room sizes up to approx. 25 m²
- Very silent (<35 dB(A) at level 1)
- Remote control

5 ltr | 130 W | 230 V ~

Dim.: 35 x 24 x 25 cm

Housing: white / black

Weight: 2,7 kg

Unit/pallet: 4/48

Art: 36.07.00



4 011833 301970

Humidifier **LB 5**



Eco mode



AUTO
Humidity
control



Ionisation



Remote
control

- Ultrasonic atomisation min. 180 ml / h to max. 400 ml / h
- With ionisation facility
- Air humidity control
- 3 speed levels
- Eco setting 40 W
- With water pre-heating facility
- 12 h timer
- Remote control
- Large LCD display
- Temperature display
- Including ceramic filter
- For room sizes up to approx. 30 m²

6 ltr | 140 W | 230 V ~

Dim.: 34 x 22 x 23 cm

Housing: silver / black

Weight: 3,8 kg

Unit/pallet: 4/48

Art: 36.15.00



4 011833 301482

NEW

Humidifier **LB 9**



continuously
variable



20
qm
Room size

- Ultrasonic water vaporization min. 250 ml / h to max. 400 ml / h
- Stepless speed control
- Economy level: 30 W
- Including ceramic filter
- 3,5 ltr. water tank
- Safety shut-off when lack of water
- For room sizes up to approx. 20 m²
- Very silent <35 dB

3,5 ltr | 30 W | 230 V ~

Dim.: 31,5 x 23 x 15 cm

Housing: white

Weight: 2,7 kg

Unit/pallet: 4/72

Art: 36.09.00



4 011833 302021

STEBA Ceramic Heater - **state-of-the-art heating:**



- **High performance and energy efficiency**
Up to 30 % higher output temperature
- **Very long service life**
By extremely durable ceramic heating systems
- **High-tech design**
Super-compact and light design
- **Maximum safety**
With overheating protection and automatic trigger switch



NEW Ceramic heater **KH 5**



- Energy saving
- High performance density with up to 30% higher outlet temperature
- With oscillation facility
- 2-setting ceramic heating element 900 / 1800 W
- Room thermostat with infinitely variable temperature control
- Washable dust filter
- Double insulation
- Safety shut-off using tumbler switch
- For rooms up to approx. 30 m²

1800 W | 230 V ~
Dim.: 25,5 x 17,5 x 16 cm

Housing: black
Weight: 1,8 kg

Unit/pallet: 6/96
Art: 39.05.00



- CUBE design
- With oscillation facility
- 2-setting ceramic heating element 700 / 1500W
- Room thermostat with infinitely variable temperature control
- High performance density with up to 30% higher outlet temperature
- Washable dust filter
- Indicator lamp
- Double insulation
- Safety shut-off using tumbler switch
- For rooms up to approx. 24 m²

1.500 W | 230 V ~
Dim.: 24 x 18 x 16 cm

Housing: red / black
Weight: 1,85 kg

Unit/pallet: 6/96
Art: 39.12.00



- Modern compact design very flat design (only 8,5 cm)
- Very silent
- 2-setting ceramic heating element 800 W / 1200 W
- Power control light
- „Click-and-stop“ Tip over switch
- Washable dust filter
- Double Isolation
- For rooms up to approx. 20 m²

1200 W | 230 V ~
Dim.: 21 x 17 x 8,5 cm

Housing: black
Weight: 1,2 kg

Unit/pallet: 6/126
Art: 39.11.00



NEW Ceramic heater KH 7



Energy-saving



Oscillating



Room size



Tip over switch



Remote control

- Ultra-thin ceramic heater with up to 30% higher outlet temperature
- Energy saving and powerful
- Touch control, LED-Display, 12 h timer
- With oscillation facility
- Very silent
- 2-setting ceramic heating element 1300 / 2500 W
- Room thermostat with infinitely variable temperature control (15 - 35°C)
- Washable dust filter
- Double insulation
- Safety shut-off using tumbler switch
- Overheating protection
- Remote control
- Handle
- Detachable glass base
- For rooms up to approx. 30 m²

2500 W | 230 V ~

Dim.: 81 x 27 x 27 cm

Housing: black

Weight: 4,5 kg

Unit/pallet: 2/24

Art: 39.17.00



4 011833 500892





Fan heater **Pikkolo 60 T 3**



Very silent



Wall-mounting



Thermostat



Frost protection

- Fast heater in high-tech design
- 60 min. timer
- Very silent
- Mobile use and wall mounting possible
- 2 stage heating fan (1000 W / 2000 W)
- Room thermostat for stepless temperature control
- Double isolation
- Overheat protection
- Cable storage
- IP21 (protected against drip water)
- For rooms up to 24 m²

2000 W | 230 V ~

Dim.: 27 x 23,5 x 12,5 cm

Housing: white / blue
Weight: 2,0 kg

Unit/pallet: 4/80
Art: 39.30.00



Fan heater **Pikkolo WM 2**



Silent



Wall-mounting



Thermostat



IP21 protected

- Fast heater in high-tech design
- Silent
- Mobile use and wall mounting possible
- 4 stage switch: off / cold air warm air (1200 W) / hot air (2000 W)
- Room thermostat for stepless temperature control
- Double isolation
- Overheat protection
- Cable storage
- IP21 (protected against drip water)
- For rooms up to 24 m²

2000 W | 230 V ~

Dim.: 27 x 23,5 x 12,5 cm

Housing: white / silver
Weight: 2,0 kg

Unit/pallet: 4/80
Art: 39.20.00



Fan heater **Pikkolo Basic 1**



Silent



Thermostat



IP21 protected



Room size

- Fast heater in high-tech design
- Silent
- 4 stage switch: off / cold air warm air (1200 W) / hot air (2000 W)
- Room thermostat for stepless temperature control
- Double isolation
- Overheat protection
- Cable storage
- IP21 (protected against drip water)
- For rooms up to 24 m²

2000 W | 230 V ~

Dim.: 27 x 23,5 x 12,5 cm

Housing: anthracite / silver
Weight: 2,0 kg

Unit/pallet: 6/120
Art: 39.10.00



Fan heater **E-VENT 1**



Thermostat



IP21 protected



Room size

- Elegant fan heater
- 4 stage switch: off / cold air warm air (1000 W) / hot air (2000 W)
- Room thermostat
- Double isolation
- Overheat protection
- Cable storage
- IP21 (protected against drip water)
- For rooms up to 24 m²

2000 W | 230 V ~

Dim.: 26 x 21,5 x 15 cm

Housing: silver / black
Weight: 1,3 kg

Unit/pallet: 6/108
Art: 39.01.00



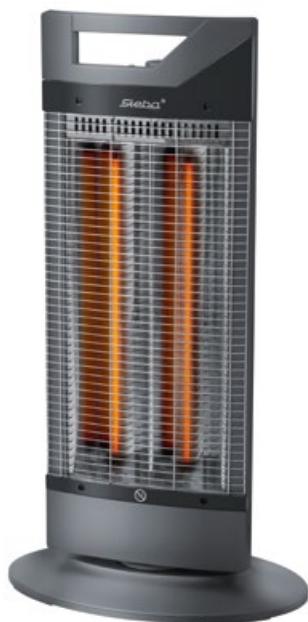


Fan heater **FH 502 TH 3T 2**

- Compact fan heater
- 4 stage switch: off / cold air warm air (1200 W) hot air (2000 W)
- Room thermostat
- Double isolation
- Overheat protection
- Handle
- Cable storage
- For rooms up to 20 m²

2000 W | 230 V ~
Dim.: 24,5 x 20 x 17 cm

Housing: white
Weight: 1,4 kg
Unit/pallet: 6/120
Art: 39.02.00



NEW

Carbon radiant heater **CH 1 ECO**



- Energy saving and efficient
- Durabel - up to 6000 hours
- With oscillation facility
- Very silent
- 2-setting carbon heating element 500 W/ 1000 W
- Room thermostat
- Double insulation
- Safety shut-off using tumbler switch
- Overheating protection
- Handle
- Cable storage
- Warms bodies and material

1000 W | 230 V ~
Dim.: 69,5 x 38 x 24 cm

Housing: black / grey
Weight: 2,5 kg
Unit/pallet: 6/48
Art: 39.31.00



Infrared quartz heater **QH 3006 BB 3**

- Infrared quartz heater for baby changing table
- Wall mounting
- Safety quartz heating element
- Stainless steel housing
- Power cord
- Stepless tilting housing from 0° to 40°
- Pull switch with 2 stages
- Double isolation
- IP24 (protected against splash water)
- Child safe

600 W | 230 V ~
Dim.: 12 x 60 x 11 cm

Housing: stainless steel / gold
Weight: 1,5 kg
Unit/pallet: 6/72
Art: 34.03.00



Infrared quartz heater **QH 2003 5**

- Infrared quartz heater
- Wall mounting
- Stainless steel housing
- 4 stage switching: off / 600 W 1200 W / 1800 W
- Stepless tilting housing from 0° to 45°
- Pull switch at central or collateral side
- Double isolation
- IP23 (protected against splash water)

1800 W | 230 V ~
Dim.: 18 x 57 x 13 cm

Housing: stainless steel / grey
Weight: 1,5 kg
Unit/pallet: 6/72
Art: 34.05.00





Silent



Thermostat



IP21
protected



Room size

Fan heater HL 638

- Efficient room heating
- Silent
- Mobile use and wall mounting possible
- 4 stage switch:
off / cold air / warm air (1200 W) / hot air (2000 W)
- Room thermostat for stepless temperature control
- Double isolation
- Overheat protection
- Handle
- IP21 (protected against drip water)
- For rooms up to 24 m²

2000 W | 230 V ~

Dim.: 38,5 x 29 x 9

cm

Model: HL 638 C1

Housing: metallic red

Weight: 2,1 kg

Unit/pallet: 4/64

Art: 39.06.00



4 011833 500816

Model: HL 638 C2

Housing: silver

Art: 39.07.00



4 011833 500823

Model: HL 638 C3

Housing: metallic green

Art: 39.08.00



4 011833 500830



Thermostat



IP21
protected



Room size

Fan heater HL 639

- Modern fan heater
- 4 stage switch:
off / cold air / warm air (1000 W) / hot air (2000 W)
- Room thermostat
- Double isolation
- Overheat protection
- IP21 (protected against drip water)
- For rooms up to 24 m²

2000 W | 230 V ~

Dim.: 31 x 23 x 15

cm

Model: HL 639 C1

Housing: metallic red

Weight: 1,4 kg

Unit/pallet: 4/96

Art: 39.13.00



4 011833 500847

Model: HL 639 C2

Housing: silver

Art: 39.14.00



4 011833 500854

Model: HL 639 C3

Housing: metallic green

Art: 39.15.00



4 011833 500861



Wall-mounting



Frost protection

Frost protector FW 100

- Wall-mounting convector with frost protection function
- Thermostat with pilot light
- Metal housing
- Double isolation
- Overheat protection
- Suitable for small rooms

500 W | 230 V ~

Dim.: 25 x 25 x 11 cm

Housing: white

Weight: 1,3 kg

Unit/pallet: 6/144

Art: 33.01.00



4 011833 500618



Bathroom heater **Mirror 60 2B stainless steel 10**



Very
silent



Frost
protection



Towel
drying



IP24
protected

- Stainless steel bathroom heater with design housing
- Very silent
- Wall mounting
- Towel drying function
- Stepless adjustable room thermostat
- 60 min. timer
- Power control light
- Double isolation with overheat protection
- Dust filter, washable
- Frost protection automatic
- IP24 (protected against splash w.)

1800 W | 230 V ~

Dim.: 52 x 39 x 19 cm

Housing: stainless steel
Weight: 4,5 kg

Unit/pallet: 4/58
Art: 39.69.00



4 011833 500588

Bathroom heater **Mirror 60 TH 6**



Very
silent



Frost
protection



IP24
protected

- Bathroom heater with design housing
- Very silent
- Wall mounting
- Stepless adjustable room thermostat
- 60 min. timer
- Power control light
- Double isolation with overheat protection
- Dust filter, washable
- Frost protection automatic
- IP24 (protected against splash w.)

1800 W | 230 V ~

Dim.: 41 x 28,5 x 11,5 cm

Housing: white / silver
Weight: 3,8 kg

Unit/pallet: 4/60
Art: 39.60.00



4 011833 500557

Fast heater **Litho KS 1**



Very
silent



Wall-
mounting



Thermostat



IP24
protected

- Fast heater in very flat design housing
- High heat and air output for an efficient room heating
- Very silent
- Wall mounting
- Mobile use
- 4 stage switch: off / cold air / warm air (1000 W) / hot air (1800W)
- Room thermostat for stepless temperature control
- Control light
- For rooms up to 30 m²

1800 W | 230 V ~

Dim.: 36,5 x 27 x 10 cm

Housing: silver / black
Weight: 2,0 kg

Unit/pallet: 4/80
Art: 39.21.00



4 011833 500809

STEBA
STEBA Elektrogeräte GmbH & Co. KG
Pointstr. 2
D-96129 Strullendorf
Germany

Tel. 0049 (0) 9543 449 - 17
Tel. 0049 (0) 9543 449 - 18
Fax 0049 (0) 9543 449 - 19

elektro@steba.com
www.steba.com

STEBA AT
Emil Pickhart GmbH
Qualitätsmarken für Österreich
Hosnedlgasse 12
1220 Wien
Austria
Tel. 0043 (0) 1 259 71 31
Fax 0043 (0) 1 259 62 63
steba@pickhart.at

STEBA IT
Schönhuber S.p.A. - AG
Via J.G. Mahl - Straße 52
39031 Brunico - Bruneck
Italy
Tel. 0039 0474 571000
Fax 0039 0474 571099
info@schoenhuber.com
www.schoenhuber.com

STEBA NL
Multibrands Marketing &
Sales B.V.
Madame Curiestraat 12
2171 TW Sassenheim
The Netherlands
Tel. 0031 (0) 252241240
Fax 0031 (0) 252241244
info@multibrands.nl
www.multibrands.nl

STEBA CH
Astavel GmbH
Lättichstrasse 4a
6342 Baar
Switzerland
Tel. 0041 (0) 41 760 45 45
Fax 0041 (0) 41 760 61 05
info@astavel.ch

Steba DK / SE / NO / FI
AK Trading ApS
Transitvej 12
DK 6330 Padborg
Denmark
Tel. 0045 77342400
Fax 0045 77342409
info@ak-trading.com
www.ak-trading.com

STEBA CZ / SK
PRIVEST s. r. o.
Na Zlatnici 301/2
147 00 Praha 4
Czech Republic
Tel. 00420 241 410 819
Fax 00420 241 410 688
steba@privest.cz
www.steba.cz
www.steba.sk

STEBA BE / LUX
BEFRAKO N.V.
KMO Zone Molenheide 4081
3520 Zonhoven
Belgium
Tel. 0032 (0) 11 82 37 97
Fax 0032 (0) 11 82 37 98
info@befrako.be
www.befrako.be

STEBA HU
Bonair BG Kft.
Lörinci út 24
1174 Budapest
Hungary
Tel. 0036 1 253 7285
Fax 0036 1 258 6992
info@bonair.hu
www.bonair.hu

STEBA LV
SIA Bajtel.LV
Brivibas gatve 214m-2,
4th floor, office No. 403
1039 Riga
Latvia
Tel. 00371 6 77 22 949
Fax: 00371 6 77 22 954
office@bajtel.lv
www.bajtel.lv

STEBA RU
COMFORT MAX, LLC
Rubtsovskaya Emb., 3, bld. 1
105082 Moscow
Russia
Tel. 007 (495) 921-02-88
www.steba-bt.ru
www.comfort-max.ru

STEBA VN
GIANG SON
EXPORT IMPORT CO., LTD
215 Bach Mai Street, Hai Ba
Trung District, Hanoi, Viet Nam
Tel. 0084 (0) 4 6686 1064
Fax 0084 (0) 4 3944 6867
Contact@giangson.vn
www.steba.vn
www.giangson.vn